

Alech Now 01

Wireless 2.4GHz Patient-Nurse Call System



**Innovative, Convenient & Reliable
alternative to Wired Patient-Nurse
Call Systems!**





Wireless 2.4GHz Patient-Nurse Call System

The Real Alternative to the Wired Systems!

The "Alech Now 01" system is made with the most advanced wireless transmission technology at 2.4 GHz. Alech srl has developed a special proprietary wireless communication protocol that allows bidirectional communication in different systems, with constant control of the correct functioning of all connected devices on the system.

Operating Area / Range of Action

Special "signal repeaters" have been developed; with which it is possible to extend the wireless range where necessary, furthermore this system can be interfaced with the LAN or Wi-fi network, to have the possibility of reaching any area of the structure.

Alech Now 01 therefore represents the perfect wireless system capable of completely replacing the traditional IP wired system and maintaining the same high standards of communication, reliability, and stability.

Once configured, Alech Now 01 is easy to install, furthermore, no masonry interventions are required for the basic system.





MT-00W



2.4GHz Wireless Patient-Nurse Call System



ELENGO TAG433Hz INSERITI

IL	NOME	EDIT	PR	CODE.C
1	BED 1	rename delete		b905
2	TAG 2	rinomina elimina		4010
3	TAG 3	rinomina elimina		1010

MT-01W

Alech "Now 01" a new smart communication technology
 Operation: The call terminals are battery-powered by with an expected useful life of approximately 3 years, communicate in a stable and continuous manner with its control unit, which also operates as an overdoor / outdoor Warning LED Light, this unit continuously controls the reception of the signal from the call terminals inside the room.
 Then the Main Central Control Unit continuously controls the reception of the signal/data coming from the various overdoor / outdoor Warning LED Light units.
 Upon receiving a call or an anomaly warning, the overdoor / outdoor Warning LED Light control unit instantly forwards the alarm to the Main Central Control Unit, that then report by means of the various devices at nurse stations as well as corridor monitors, tablets, cell phones, etc.

All system alarms and system processes can then be examined on the dedicated software (SOFT-IOT00) expressly designed for receiving and recording calls, managing the call log, integrating additional call terminals or receivers.
 It is also possible to interface with tablets, mobile phones, TVs, PCs and receive messages and calls on one or more devices simultaneously.

- Different types of data can be collected such as:
- Automatic presence of staff inside patients' rooms
 - Battery level of various devices
 - Continuous verification of the operation of the various devices
 - Locating personnel on movement
 - Locating patients
 - Anti-wandering function
 - Staff anti-assault alarm
 - Location of personnel
 - Location of equipment

Automatic presence of staff inside a room:
 Staff wearing an ID Tag can be automatically detected and identified within a room, thus keeping a record of their presence on the management software.

Battery level of the various devices:
 The system continuously monitors the battery level of each single call terminal and their correct functioning, transmitting an alarm to the control center and the management software.

Locating personnel on movement:
 Depending on the number of sensors that have been placed inside a ward or inside an area, it will be possible to get a more or less accurate localization of the position of the staff or of patients wearing an ID Tag, it will then also be possible to use a standard call terminal or anti-aggression call terminal with active localization.

Smartphone

AP-A01



The "Alech Now01" System allows integration with mobile devices such as smartphones and Tablets, thus granting the possibility of monitoring the situation of ongoing calls and the possibility of taking charge of the call by the first available operator



APP Mobile or tablet Mobile or tablet: it operates only on Android system; it allows to receive notifications and alarms and to take in charge calls by the operator. (Wi-Fi connection is required).

Main Control Unit

IP-WS01



Main Control Unit allows the management and monitoring of all call terminals present at a pavilion or on a floor; it can manage different communication protocols with Alech Now01 (2.4GHz), WI-FI, LAN, Alech01 (433/869MHz), depending on the selected model.
 It allows interfacing with tablets or mobile PCs for programming and managing the system and calls. Maintains continuous monitoring of devices communication; the battery level and the status of all ongoing calls, it also allows to receive notifications and calls on mobile phones and tablets; it also allows to manage notifications from any place by connecting via Internet, linking to monitors of any size and managing portable radio frequency reception devices.

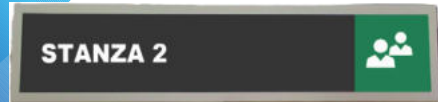
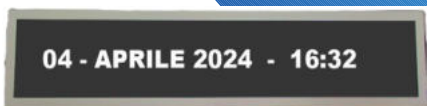
LCD Corridor Monitor

MT-00V-T01



LCD digital corridor monitor, with direct display of calls in progress and calls delays are defined by the color which is set in three different ones: green, yellow and red; also with acoustic alarms differentiated on the type of call. Dimensions 21" set with wall bracket.

AN-AD2400



LCD Corridor Monitor.

Displays all calls by type (patient call, presence, emergency) and their sector of provenance. The waiting times of the different calls are defined by the color which is set in three different ones: green, yellow and red.

Differentiated acoustic alarm depending on the type of call; Date and Time display when there are no call on request.

Dimensions: 617mm x 140mm x 50mm

White color

Wi-Fi or LAN connections

B10WR



Wearable TAG for intended for healthcare Staff set with a call button, that in case of need, healthcare operators can call for help and to be promptly located.

B7-WR01



Wearable TAG for patients which allows their location

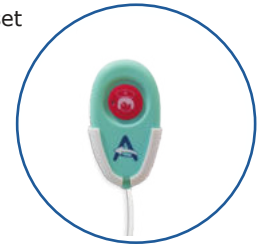
AN Series Call Terminals

2.4GHz wireless call terminals built with antibacterial material, equipped with flashing LED light and acoustic signal to reassure the patient.
 Patient's extension handset safety disconnection system that prevents damage to the devices and activates a disconnection alarm.
 3 years battery useful life.
 Programmed to maintain continuous communication with their master control station.
 With Code Blue Protocol Button.



AN-O2WPE

Head Bed Call terminal
 Wireless Head Bed Call terminal with Call, Presence Reset and BLUE CODE functions.
 Device built with antibacterial material, equipped with flashing LED light and acoustic signal to reassure the patient.
 Set up with a connection socket for attaching a patient extension handset made of antibacterial silicone and washable by total immersion in disinfectant liquid.
 Patient's extension handset with button safety disconnection system that prevents damage to the devices and activates a disconnection alarm.
 Programmed to maintain constant communication with their main control station.
 Wide signal coverage
 Battery useful life of at least 3 years
 IP54 Protection Degree
 Dimensions: 115mm x 75mm x 27mm



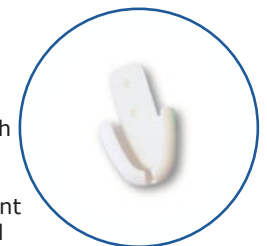
PR-L00

Patient's extension handset set with call button and made of antibacterial silicone, completely washable even by immersion in disinfectant liquid and equipped with 2.5 m long cable.



AN-O2WE

Wireless Head Bed Call terminal with Call, Reset and BLUE CODE functions.
 Device built with antibacterial material, equipped with flashing LED light and acoustic signal to reassure the patient.
 Set up with a connection socket for attaching a patient extension handset made of antibacterial silicone and washable by total immersion in disinfectant liquid.
 Patient's extension handset with button safety disconnection system that prevents damage to the devices and activates a disconnection alarm.
 Programmed to maintain constant communication with their main control station.
 Wide signal coverage
 Battery useful life of at least 3 years
 IP54 Protection Degree
 Dimensions: 115mm x 75mm x 27mm



Support bracket



RJ45 connector

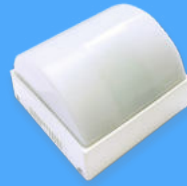


AN-O2WTPE

Wireless Toilet Call terminal with Call, Reset and BLUE CODE functions, set with anti-strangulation pull-cord made in antibacterial material.
 Bright LED light and acoustic signal to reassure the patient.
 Programmed to maintain constant communication with their main control station.
 Wide signal coverage
 Battery useful life of at least 3 years
 IP65 Protection Degree
 Dimensions: 115mm x 75mm x 27mm

Overdoor (Outdoor) Warning LED LIGHT

LT-Now01



Presence



Toilet Call



Standard Call



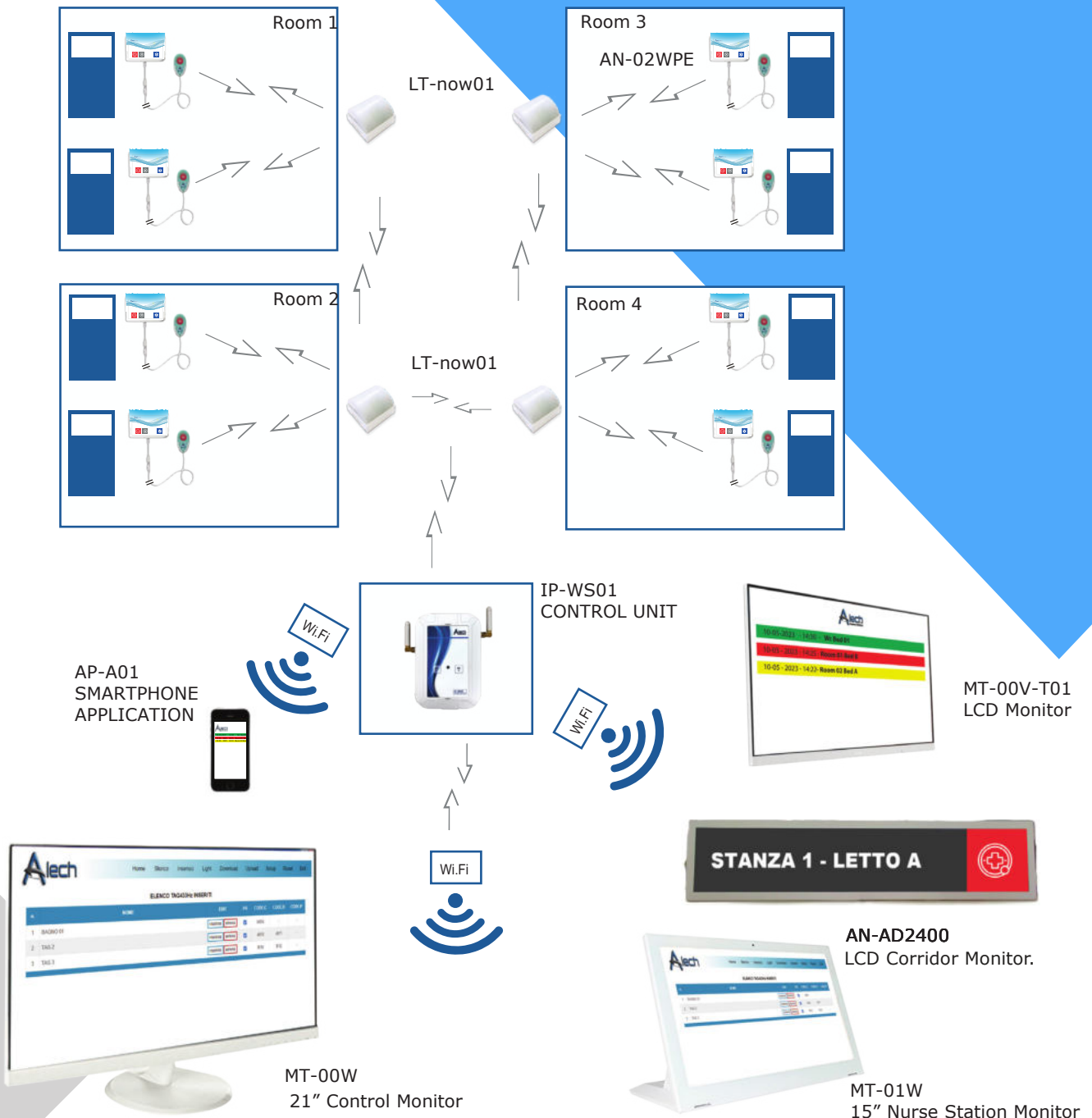
Blue Code Call

Overdoor (Outdoor) warning LED LIGHT and control device for call terminals inside a room. A smart, multipurpose unit that monitors all linked call terminals inside a room (Beds & Toilet) their correct communication with the Main Control Unit at pavilion/floor; and simultaneously operates as an external warning LED LIGHT with visual and acoustic alarms; thus, keeping each room autonomous even in the event of a lack of connection with the Main Control Unit. The device requires its specific external power supply. Acoustic and visual warning alarms in different colors (GREEN, RED, WHITE, BLUE)
 Dimensions: 104mm x 86mm x 38mm

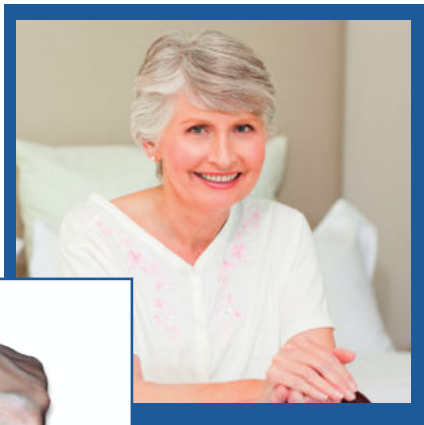
Operation diagram:

Configuration Example

Every calling terminal inside a room is constantly monitored by the LT-Now01 device with external warning light function; each Warning Light / controller is constantly in communication with other Warning Lights / controllers placed at the pavilion / floor to create a communication network that reaches the Main Central Control Unit, which also can connect to the WI-FI network and be able of exchanging data with all connected devices.



Alech Guard "Tracking System"



"Alech Guard" can give more freedom to patients without necessarily restricting their movements to small areas. The system can simply send an alarm when the patient enters a specific area or pathway; Otherwise, the system is able to constantly monitor the presence of patients and their location by sending alarms only under certain programmed conditions

How it works: Each patient who will be monitored will have to wear the NW-01 Tag, which will allow the system to detect its presence, so that, if a patient enters a banned area, a warning alarm in the system will report the transgression and the exact affected area; in this way the staff will intervene and check what is happening and will be able to reset the alarm. The system can operate in stand-alone mode or integrated with the Alech now01 system with multi-device mode to be able to monitor all the alarms of the various access points in real time

It will also be possible to activate acoustic alarms or activate locking of doors systems, etc.

The system controlling unit will automatically record up to 100 alarms indicating the date/time and the code of the detected tags.

A wireless system with an easy installation without the need of any masonry intervention.

- Compatible with the Alech now01 Patient-Nurse Call System
- TAG detection range adjustable up to 10 levels from 2m to 20m
- Possibility of linking multiple control units simultaneously.
- Up to 100 patient TAGS can be stored on the system with self-learning mode.
- TAG programming and access to all program settings by connecting to the central control unit via smartphone or PC
- Simple installation: Power supply required just for running the NA001 central control unit.



NA001

Central Control Unit

SPECIFICATIONS
2,4 GHz Active TAGs reader
433 MHz transmitter
Reader sensor range 2-20m
Low battery alarm
Log data memory



NW 01

Wrist bracelet with safety clasp



NCTR-07

Safety Card for Alarm
Reset and Patient
Accompaniment





ALECH SRL
Via Platone 22/1
42048 - Rubiera (RE) - Italy
www.alech.net - info@alech.net
Tel +39 0522 1770350
IT02478720358