

IFIS 怡飞仕 BEAUTY

Support you, Define you.

IFIS Spa Facial Chairs are designed to meet the versatile needs of spa treatments, medical examinations, and cosmetic procedures, making them ideal for day spas, estheticians, and beauty professionals. With a focus on ergonomic design and advanced quality, IFIS ensures optimal comfort for clients and enhanced efficiency for practitioners.

We use superior materials and provide dependable after-sales service at reasonable prices, empowering estheticians and beauty experts to deliver exceptional care. Our mission is to elevate the spa treatment experience for clients while helping salons and clinics minimize operational costs.

At IFIS, we maintain a forward-thinking and innovative philosophy, breaking traditional boundaries to continuously deliver fresh, functional, and user-friendly designs.



Taylor Series



Taylor-430

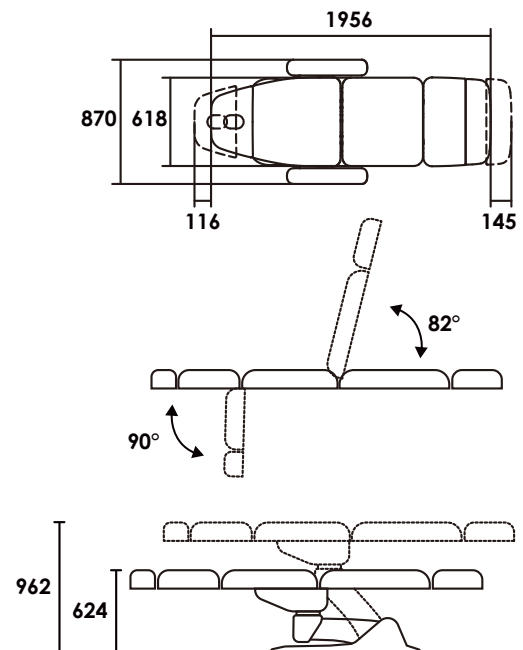


Features:

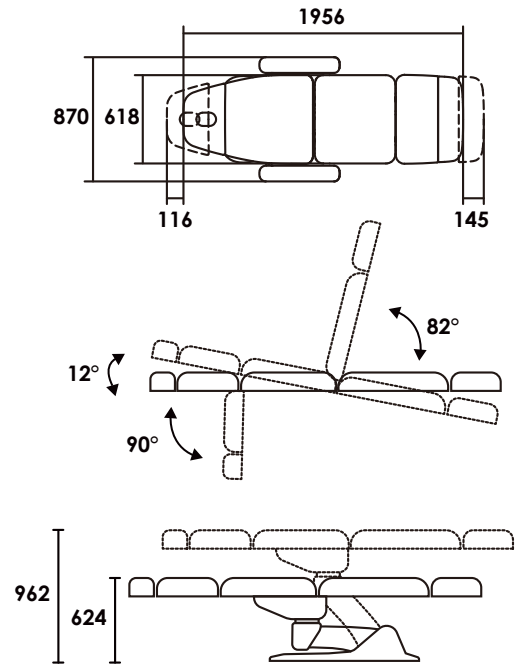
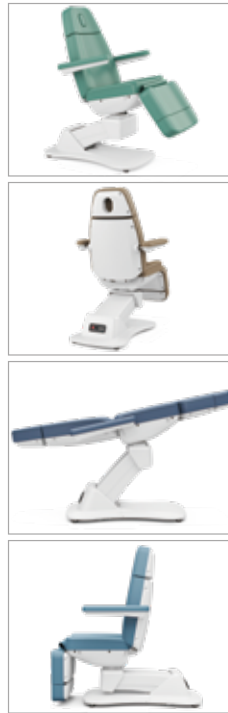
- Electric height adjustment
- Electric tilting backrest 0°~82° angle adjustment
- Electric tilting legrest 0~90° angle adjustment
- Hand Controller
- Memory System
- Removable leveled side armrests
- Durable PVC yet soft like PU
- Luxurious 3.5"/8.7cm foam padding
- Removable and adjustable neck/face pillow

Specification:

- Length: 76.7"/195cm
- Width: 24.6"/62cm (33.5"/85cm including side armrest)
- Height: 24"/61cm-37.4"/95cm
- Working Capacity: 440lbs/200kg
- Product Weight: 216lbs/98kg
- Gross Weight: 240lbs/109kg
- Package Size: 59"/150cmx31.5"/80cmx25.6"/65cm



Taylor-440



Specification:

- Length: 76.7"/195cm
- Width: 24.6"/62cm(33.5"/85cm including side armrest)
- Height: 24"/61cm-37.4"/95m
- Working Capacity: 440lbs/200kg
- Product Weight: 216lbs/98kg
- Gross Weight: 240lbs/109kg
- Package Size: 59"/150cmx31.5"/80cmx25.6"/65cm

Features:

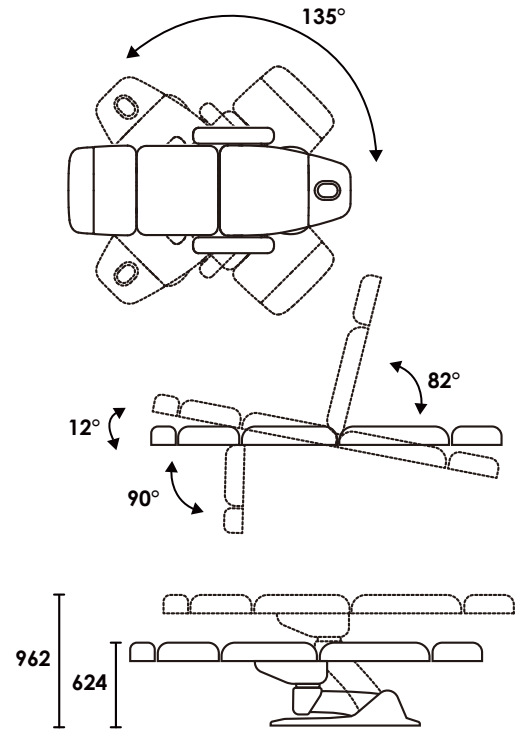
- Electric height adjustment
- Electric tilting backrest 0°~82° angle adjustment
- Electric tilting legrest 0°~90° angle adjustment
- Electric table Inclination 0°-12°
- Hand Controller
- Memory System
- Removable leveled side armrests
- Durable PVC yet soft like PU
- Luxurious 3.5"/8.7cm foam padding
- Removable and adjustable neck/face pillow

Taylor-440FC

Tip: Stirrups weigh 15lbs/ 6.8kg



Taylor-470



Specification:

- Length: 76.7"/195cm
- Width: 24.6"/62cm(33.5"/85cm including side armrest)
- Height: 24.6"/62 cm-37.8"/96cm
- Working Capacity: 440lbs/200kg
- Product Weight: 220lbs/100kg
- Gross Weight: 249lbs/113kg
- Package Size: 59"/150cmx31.5"/80cmx26"/66cm

Features:

- Electric height adjustment
- Electric tilting backrest 4°~82° angle adjustment
- Electric tilting legrest 0°~90° angle adjustment
- Electric table Inclination 0°-12°
- Table top rotation: $\pm 135^\circ$
- Hand Controller
- Memory System
- Removable leveled side armrests
- Durable PVC yet soft like PU
- Luxurious 3.5"/8.7cm foam padding
- Removable and adjustable neck/face pillow

Taylor-470FC

Tip: Stirrups weigh 15lbs/ 6.8kg





Jiangsu Mintang Health & Technology Co., Ltd
No, 10th, Jinfeng Road, Dafeng District, Yancheng City, Jiangsu, CHINA